



Fittings for the Paintshop Industry

The Eco-Tube Couplings belong to the family of those fittings that offer best connections combined with a minimum dead-space. They are mostly used for such applications where smooth and piggable unions are required.



The Fittings are made up of four components: the Liner, the male part with a sealing ring and the nut. The male part and the liner are screwed together with the nut. During assembly the male part and the liner center each other on an exactly defined geometry.

Ecotube
spullarm / cavity-free



The welding-ends of the liner and male part can be chosen by the customer for all known welding techniques (orbital, autogenous, etc.).

The Eco-Tube Couplings are specially made for the applications of paintshops, where they are used as standard items also by well-known manufactures.



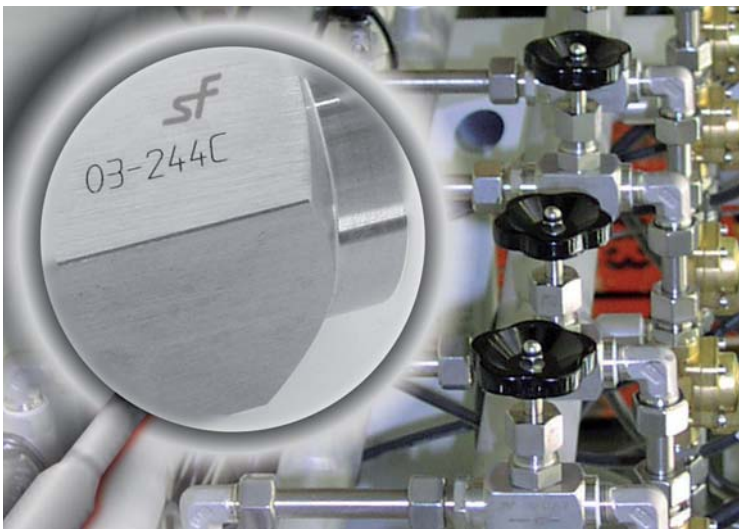
■ LL-Couplings

Bite ring couplings in a light and elegant design.

These Fittings have been developed especially for the needs of robot-systems in paintshops for the automotive sector.

- For Pipe dimension 9 mm to 12 mm in a very light design
- Smallest Fittings, that require very little space

Corresponding pipes, pipe clamps and hoses complete our wide product range.



■ Small number, much information

All items that have contact with the medium do have a test-number laser-marked. There is a lot of information linked to that number. So even after years, we can guarantee to provide a 3.1 certificate with regards to the basic material and all mechanical tests that have been carried out.

What is your advantage? If you have assembled an item in your unit and this unit is going to be approved (TÜV, ...) you can, even after years, still demand certificates from Schwer Fittings.

■ Quality Management

Schwer Fittings complies with the requirements of the processing industry and provides solutions that offer the optimum answers to complex demands.

Therefore the products of Schwer Fittings are subject to the strictest Quality Standards: starting from the raw material, followed by permanent quality controls during the manufacturing process until the final approval.

We can sustain that high quality standard of Schwer Fittings Products with regards to our own production and testing facilities.



schwer
fittings

Schwer Fittings GmbH
Hans-Schwer-Platz 1
D-78588 Denkingen
Tel.: +49 (0) 74 24 / 98 25-0
Fax: +49 (0) 74 24 / 98 25-7900
info@schwer.com
www.schwer.com